

Cocktails anyone?



SKINNY

by Jessica Elliot



SKINNY - N. [SKIN.E]

1. Knowledge, keen insight, on top of the in and out.
Ex. We know how to keep the ladies up on the Skinny at home or on the go. "She definitely has the Skinny!" "She's got the Skinny!" 2. Confidential information known by us, that makes the ladies say... "Oh My!!!" Ex. Get the Skinny before you decide to pick up some other jewelry or uhhh...Any other Bling!

SEMI-PRECIOUS, SWAROVSKI CRYSTAL, ENAMEL, LEATHER

CONTACT: JESSICA ELLIOT
PH. 323.656-2878/FX. 323.656-2881
WWW.SKINNYSTYLE.COM
ORDERS@SKINNYSTYLE.COM

SWAROVSKI OPEN SHANK RINGS and MATCHING PENDANTS NEW!!!

***RINGS COME IN SIZES 6,7,8



R67(G)C-GldShd, LilacShd, BrnzShd, BlkDiam, BlueShd,Hema
\$16/each
from left to right, top to bottom



R67(NI)C-BlkDiam, BlueShd, LilacShd, Hema
\$16/each
from left to right



R68(G)C-WhtOpl, Turq, Coral, GldShd, PacOpl, ProLav, Erin, BlkDiam, Hema, SmkTpz
\$16/Each
from left to right, top to bottom



R68(NI)C-WhtOpl, Turq, PacOpl, Erin, BlkDiam, ProLav, Hema
\$16/Each
from left to right, top to bottom



CUSHION CUT SQUARE IS JUST UNDER 1/2" , LARGE BAGUETTE IS APPROX. 1/4" X 1"



R69(G)C-WhtOpl, GldShd, PacOpl, LilacShd, BrnzShd, R69(NI)C-WhtOpl, PacOpl
\$22/each
from left to right, top to bottom



R70(G)C-SiShd, GldShd, Erin, BlkDiam \$22/each
R70(NI)C-SiShd, BlkDiam, Erin \$22/each
from left to right, top to bottom



NK69(G)C-PacOpl, WhtOpl, GldShd, BrnzShd, LilacShd
NK69(NI)C-PacOpl, WhtOpl
\$ 18 /each
from left to right



NK70(G)C-SiShd, GldShd, Erin, BlkDiam
\$ 18 /each
from left to right



NK70(NI)C-SiShd, Erin, BlkDiam
\$ 18 /each
from left to right



DOUBLE ROW PAVE SWAROVSKI BAR RINGS, STUDS, AND HUGGIES NEW!!!

***RINGS COME IN SIZES 6,7,8



R71(G)C-GldShd, Crstl, Turq, Erin, WhtOpl, BlkDiam, Hema
\$14/Each
from left to right, top to bottom



R71(NI)C-Crstl, WhtOpl, Turq, Erin, BlkDiam, Hema
\$14/Each
from left to right, top to bottom



E71(G)C-Erin, Turq, WhtOpl, Crstl, GldShd, BlkDiam, Hema

E71(NI)C-WhtOpl, Erin, Turq Crstl, BlkDiam, Hema

\$20/Pair

from left to right, top to bottom



***Earring posts are 14K Gold-Filled or Surgical Steel, Backings are Gold-Plated Brass (Nickel Free/Hypoallergenic) or Surgical Steel

HUGGIES!!



Hug71(G)C-GldShd, Crstl, Erin Turq, WhtOpl BlkDiam, Hema

Hug71(NI)C-Crstl, Erin, Turq WhtOpl, BlkDiam, Hema

\$25/Pair

from left to right, top to bottom

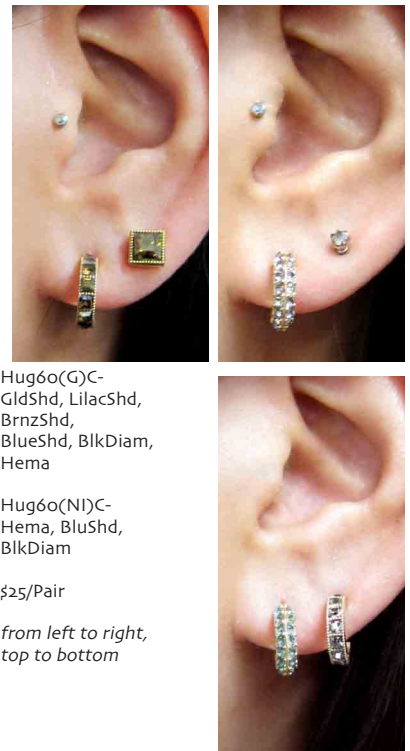


Hug60(G)C-GldShd, LilacShd, BrnzShd, BlueShd, BlkDiam, Hema

Hug60(NI)C-Hema, BluShd, BlkDiam

\$25/Pair

from left to right, top to bottom



PAVE SWAROVSKI "V" NECKS AND RINGS NEW!!!

***Large "V" neck pendant has 21 stones- approx. 17 1/2"+2" extension, Small "V" neck pendant has 13 stones-approx. 17"+2" extension



Large "V"

Small "V"

VNk(G)-Lrg-GldShd, WhtOpl, Coral, Turq, BlkDiam, SmkQu, Hema \$18/each
from left to right

VNk(G)-Sml-WhtOpl, Coral, Turq, GldShd, BlkDiam, SmkQu, Hema \$15/each
from top to bottom



VNk(NI)-Lrg-WhtOpl, Turq, BlkDiam, Hema \$18/each
from left to right

VNk(NI)-Sml-WhtOpl, Turq, BlkDiam, Hema \$15/each
from left to right

Make any neck into a Double-- Small V on top, Large V on the bottom... and customize your colors. List the Top Color first...



VNk(G)-Dbl-BlkDiam/Hema \$29 VNk(G)-Dbl-SmkQu/GldShd \$29 VNk(G)-Dbl-WhtOpl/Turq \$29 VNk(NI)-Dbl-WhtOpl/Hema \$29

Rings come in sizes 6,7,8



VRing(G)-WhtOpl, GldShd, Hema, Turq, Coral, BlkDiam, SmkQu \$12/each
from Top to bottom, and from left to right

VRing(NI)-WhtOpl, Turq, BlkDiam, Hema \$12/each
From left to right

SWAROVSKI BAGUETTE COLLAR NECKLACE

NEW!!!!

***Necklace is approx. 16 1/2" plus a 3" extension



Coll49(NI)C-SiShd, BlkDiam, Erin, Mont
\$36/each from top to bottom



Coll49(G)C-SiShd, GldShd, BlkDiam
\$36/each from top to bottom



Coll49(G)C-Erin, SmkTpz, Mont
\$36/each from top to bottom



SWAROVSKI "EGYPT" CUFF



Cuff59(G)C- GldShd, BlueShd (Top) \$32/each
Cuff59(G)C-Erinite, BlkDiam (Bottom) \$32/each



Cuff59(NI)C-BlkDiam, Erinite, BlueShd \$32



SWAROVSKI "PETAL" RING

***RINGS AVAILABLE IN SIZES 6,7,8

***RINGS ARE HAND-ANTIQUED SO EACH ONE WILL DIFFER, GIVING YOU A ONE OF A KIND PIECE



R53(G)C- BlkDiam \$24



R53(G)C- SmokyQu \$24



R53(G)C- Burg \$24



R53(G)C- Mont \$24



R53(G)C- Erinite \$24



R53(G)C- GldShd \$24



R53(G)C- Astral Pink \$24



R53(G)C- Antique Pnk \$24



SWAROVSKI CRYSTAL TRIANGLE AND MARQUIS SOLITAIRES

***RINGS COME IN SIZES 6,7,8

***EARRING POSTS ARE 14K GOLD-FILLED OR SURGICAL STEEL, BACKINGS ARE GOLD-PLATED BRASS (NICKEL FREE/HYPOALLERGENIC) OR SURGICAL STEEL



R65(G)C-Sishd, VintRs, BluShd, GldShd, BlkDiam \$12/each



R65(G)C-Sishd, BlkShd, BlkDiam \$12/each



R66(G)C-Sishd, GldShd, LilacShd, Mont, BlkDiam \$12/each



R66(NI)C-Sishd, Mont, BlkDiam \$12/each



NK65(G)C-Sishd, VintRs, BlueShd, GldShd, BlkDiam \$14/each



NK65(G)C-Sishd, BlueShd, BlkDiam \$14/each



E65(G)C-Sishd, GldShd, VintRs, BlueShd, BlkDiam \$20/Pair

E65(NI)C-Sishd, BlueShd, BlkDiam \$20/Pair



NK66(G)C-Sishd, GldShd, LilacShd, Mont, BlkDiam \$14/each



NK66(NI)C-Sishd, Mont, BlkDiam \$14/each

E66(G)C-Sishd, GldShd, LilacShd, Mont, BlkDiam \$20/Pair

E66(NI)C-Sishd, Mont, BlkDiam \$20/Pair



Add any color Marquis onto an Earwire (EW) for \$20, or an Oval Hoop (HP) for \$22

EW66(NI)C-BlkDiam

EW66(G)C-GldShd

EW66(G)C-Sishd \$20/Pair



HP66(G)C-LilcShd HP66(G)C-Mont HP66(NI)C-BlkDiam \$22/Pair

SWAROVSKI CRYSTAL ROUND BEZEL SOLITAIRES

***Rings come in sizes 6,7,8



R33(G)C-SiShade \$10 "Silver Shade"



R33(G)C-VinRs \$10 "Vintage Rose"



R33(G)C-PrLav \$10 "Provence Lavender"



R33(G)C-GryOp \$10 "Grey Opal"



R33(G)C-GldShd \$10 "Golden Shadow"



R33(G)C-Fuch \$10 "Fuchsia"



R33(G)C-Erin \$10 "Erinite"



R33(G)C-BlkDiam \$10 "Black Diamond"



R33(G)C-Hem \$10 "Hematite"



R33(NI)C-Sishd \$10 "Silver Shade"



R33(NI)C-PrLav \$10 "Provence Lavender"



R33(NI)C-GryOp \$10 "Grey Opal"



R33(NI)C-Erin \$10 "Erinite"



R33(NI)C-BlkDiam \$10 "Black Diamond"



R33(NI)C-Hema \$10 "Hematite"

SWAROVSKI CRYSTAL "ROCK CANDY" RINGS, NECKLACES, STUDS

***RINGS COME IN SIZES 6,7,8

***EARRING POSTS ARE 14K GOLD-FILLED OR SURGICAL STEEL, BACKINGS ARE GOLD-PLATED BRASS (NICKEL FREE/HYPOALLERGENIC) OR SURGICAL STEEL



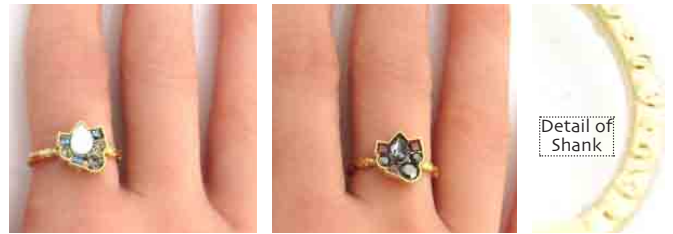
R61(G)C-Sandopl, R61(G)C-PacOpl, R61(G)C-GldShd, R61(G)C-SiShd
R61(NI)C-SiShd \$11/Each
from left to right, top to bottom



R62(G)C-Sandopl, R62(G)C-PacOpl, R62(G)C-BlkDiam,
R62(G)C-Hema, R62(NI)C-BlkDiam, R62(NI)C-Hema \$11/Each
from left to right, top to bottom



R64(G)C-GldShd, R64(G)C-WhtOpl, R64(G)C-BlkDiam
R64(NI)C-WhtOpl, R64(NI)C-BlkDiam \$14/Each
from left to right



Detail of Shank



R63(G)C-PacOpl, R63(G)C-BrnzShd, R63(G)C-BlkDiam
R63(NI)C-PacOpl, R63(NI)C-BlkDiam \$14/Each
from left to right



Necklaces are approx. 16 1/2" plus a 2" extension... great for layering!



NK62(G)C-SndOpl, NK62(G)C-PacOpl, NK62(G)C-BlkDiam,
NK62(G)C-Hema, NK62(NI)C-BlkDiam, NK62(NI)C-Hema
\$14/each from left to right



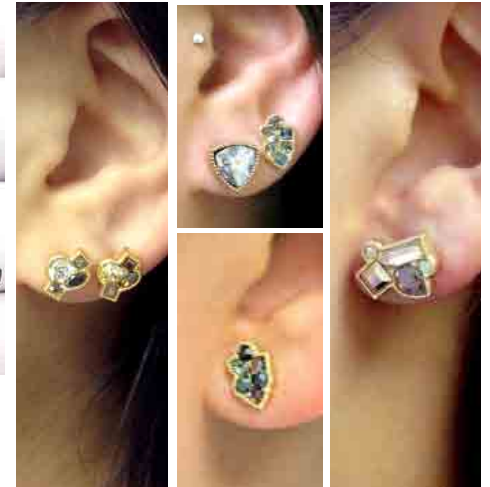
NK63(G)C-BrnzShd, NK63(G)C-PacOpl, NK63(G)C-BlkDiam
NK63(NI)C-PacOpl, NK63(NI)C-BlkDiam
\$16/Each from left to right



E61(G)C-PacOpl, E61(G)C-GldShd, E61(G)C-Sandopl, E61(G)C-SiShd
E61(NI)C-SiShd \$20/Pair
from left to right, top to bottom



E62(G)C-Sandopl, E62(G)C-PacOpl, E62(G)C-BlkDiam, E62(G)C-Hema
E62(NI)C-BlkDiam, E62(NI)C-Hema \$20/Pair
from left to right, top to bottom



E63(G)C-BrnzShd, E63(G)C-PacOpl, E63(G)C-BlkDiam
E63(NI)C-PacOpl, E63(NI)C-BlkDiam \$24/Pair
from left to right, top to bottom

MARQUIS, SQUARE, AND ROUND "BAR" STACKABLE RINGS AND STUDS IN SWAROVSKI CRYSTAL

***Rings available in sizes 3,4,6,7,8



R56(G)C-WhtOpl, GldShd, AstPnk, BrnzShd, BlkDiam, Hema \$11/each



R56(NI)C-WhtOpl, BkDiam, Hema \$11/each



R60(G)C-GldShd, LilacShd, BrnzShd, BlueShd, BlkDiam, Hema \$11/each



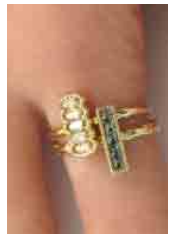
R60(NI)C- BlueShd, LilacShd, BlkDiam, Hema \$11/each



R58(G)C-GldShd, ProLav, SmkTpz, Blkdiam, Hema, WhtOpl, Coral, Turq, PacOpl, Erin, SiShd (not pictured) \$11/each
from left to right, top to bottom



R58(NI)C-ProLav, Blkdiam, Hema, WhtOpl, Erin, PacOpl, Turq, SiShd (not pictured) \$11/each
from left to right, top to bottom



Detail of Shank

EARRING POSTS ARE 14K GOLD-FILLED OR SURGICAL STEEL, BACKINGS ARE GOLD-PLATED BRASS (NICKEL FREE/HYPOALLERGENIC) OR SURGICAL STEEL



E56(G)C-WhtOpl, GldShd, AstPnk, BrnzShd, BlkDiam, Hema \$20/pair

from left to right, top to bottom



E58(G)C-WhtOpl, Turq, Coral GldShd, PacOpl, Erin ProLav, BlkDiam, SmkTpz, Hema, SiShd (not pictured) \$20/pair

from left to right, top to bottom



E56(NI)C-WhtOpl, BlkDiam, Hema \$20/pair

from left to right



E58(NI)C-WhtOpl, PacOpl, Turq, Erin, ProLav, BlkDiam, Hema, SiShd (not Pictured) \$20/pair

from left to right, top to bottom



E60(G)C-GldShd, Brnzshd, LilacShd, BlueShd, BlkDiam, Hema \$20/Pair

from left to right, top to bottom



E60(NI)C-BlueShd, LilacShd, BlkDiam, Hema \$20/pair

from left to right

TEARDROP, BAGUETTE, ROUND, AND SQUARE SWAROVSKI SOLITAIRE STACKABLE RINGS AND STUDS

***Rings come in sizes 3,4,6,7,8 ***EARRING POSTS ARE 14K GOLD-FILLED OR SURGICAL STEEL
 ***BACKINGS ARE GOLD-PLATED BRASS (NICKEL FREE/HYPOALLERGENIC) OR SURGICAL STEEL



R48(G)C-WhtOpl, GldShd, PacOpl, ProLav, AstPnk, BrnzShd, BlkDiam \$9/each from left to right



R49(G)C-SiShd, GldShd, Erin, Mont, BlkDiam, SmTpz, \$9/each from left to right



R55(G)C-WhtOpl, SiShd, BlkDiam, BrnzShd, RsGld, Hema \$9/each from left to right



R48(NI)C-WhtOpl, PacOpl, ProLav, BlkDiam \$9/each from left to right



R49(NI)C-SiShd, BlkDiam, Erin, Mont \$9/each from left to right



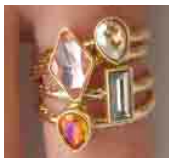
R55(NI)C-WhtOpl, SiShd, BlkDiam, Hema \$9/each from left to right



R54(G)C-SiShd, GldShd WhtOpl, PnkOpl, GreyOpl \$9/each from left to right



PacOpl, GrnPalOpl, Erin BlkDiam, Burg, Hema R54(NI)C-WhtOpl, PacOpl, GreyOpl, SiShd, BlkDiam, Hema \$9/each from left to right



E48(G)C-WhtOpl, GldShd, PacOpl, ProLav, AstPnk, BrnzShd, BlkDiam \$16/Pair from left to right, top to bottom



E48(NI)C-WhtOpl, PacOpl, ProLav, BlkDiam \$16/Pair from left to right, top to bottom



E49(G)C-GldShd, SmTpz, SiShd, BlkDiam, Mont, Erin \$16/Pair from left to right, top to bottom



E49(NI)C-SiShd, BlkDiam, Erin, Mont \$16/Pair from left to right, top to bottom



E55(G)C-SiShd, WhtOpl, BlkDiam BrnzShd, RsGld, Hema \$16/Pair from left to right, top to bottom



E55(NI)C-SiShd, WhtOpl, BlkDiam, Hema \$16/Pair from left to right, top to bottom



E54(G)C-SiShade GldShd, PnkOpl, WhtOpl, GreyOpl, PacOpl, Erinite, GrnPalOpl, BlkDiam, Burg, Hema \$16/Pair from left to right, top to bottom



E54(NI)C-WhtOpl, PacOpl, GryOpl, SiShd, BlkDiam, Hema \$16/Pair from left to right, top to bottom

PAVE CRYSTAL "BUTTON" STUD EARRINGS AND SOLITAIRE RINGS

***RINGS COME IN SIZES 6,7,8

***EARRING POSTS ARE 14K GOLD-FILLED OR SURGICAL STEEL, BACKINGS ARE GOLD-PLATED BRASS (NICKEL FREE/HYPOALLERGENIC) OR SURGICAL STEEL



E44(G)C-WhtOpl \$22



E44(G)C-Crl \$22



E44(G)C-Turq \$22



E44(G)C-Crystal \$22



E44(G)C-LtColo \$22



E44(G)C-BlkDia \$22



E44(G)C-CapriBlue \$22



E44(G)C-DpTanz \$22



E44(G)C-Hema \$22



E44(NI)C-WhtOpl \$22



E44(NI)C-Turq \$22



E44(NI)C-CapriBl \$22



E44(NI)C-BlkDia \$22



E44(NI)C-Hem \$22



R44(G)C-WhtOpl \$16



R44(G)C-Crl \$16



R44(G)C-Turq \$16



R44(G)C-Crystal \$16



R44(G)C-LtColo \$16



R44(G)C-BlkDia \$16



R44(G)C-CapriBl \$16



R44(G)C-DpTanz \$16



R44(G)C-Hema \$16



R44(NI)C-WhtOpl \$16



R44(NI)C-Turq \$16



R44(NI)C-CapriBl \$16



R44(NI)C-BlkDia \$16



R44(NI)C-Hema \$16



MARQUIS, SQUARE, AND ROUND "BAR" BEZEL NECKLACES, HOOPS AND DANGLE EARRINGS WITH SWAROVSKI CRYSTALS NEW!!!



NK56(G)C-WhtOpl, GldShd, AstPnk, BrnzShd, BlkDiam, Hema \$13/each



Necklaces are all on 16" + 2" extension

NK60(G)C-GldShd, LilacShd, BrnzShd, BlueShd, BlkDiam, Hema \$13/each



NK58(G)C-WhtOpl, Coral, Turq, PacOpl, Erin, Gldshd, SmkTpz, ProLav, BlkDiam, Hema, SiShd (not pictured) \$13/each



HP56(NI)-WhtOpl, HP60(G)-LilacShd, HP58(NI)-PacOpl, HP56(G)-AstPnk, HP58(G)-GldShad, HP60(G)-BrnzShd, HP56(G)-WhtOpl \$22/Pair



NK56(NI)C-WhtOpl, BlkDiam, Hema \$13/each



NK60(NI)C- BlueShd, LilacShd, BlkDiam, Hema \$13/each



NK58(NI)C-WhtOpl, PacOpl, Turq, Erin, ProLav, BlkDiam, Hema, SiShd (not Pictured) \$13/each

EW56(G)-BrnzShd

EW58(G)-WhtOpl

EW56(NI)-BlkDiam

EW60(G)-Hema

EW58(G)-Coral \$20/Pair

from left to right, top to bottom

Take any Shape/color and put on an Oval Hoop (HP, \$22) or dangle from an Earwire (EW \$20)



HP49(G)-SmTpz, HP55(G)-Hema, HP48(G)-WhtOpl, HP48(G)-AstPnk, HP49(G)-Erin, HP55(G)-RsGld \$16/Pair

From left to right, Top to Bottom



HP49(NI)-Mont, HP55(NI)-SiShd, HP48(NI)-ProLav, HP49(NI)-BlkDm, HP55(NI)-WhtOpl, HP48(NI)-PacOpl \$16/Pair

From left to right, Top to Bottom

SMALL BEZEL NECKLACES, HOOPS, AND DANGLE EARRINGS WITH SWAROVSKI CRYSTALS



NK48(G)C-GldShd, WhtOpl, PacOpl, ProLav, AstPnk, BrnzShd, BlkDiam \$10/each



Necklaces are all on 16" + 2" extension

NK49(G)C-SiShd, GldShd, SmTpz, BlkDiam, Erin, Mont \$10/each



NK55(G)C-WhtOpl, SiShd, BlkDiam, BrnzShd, RsGld, Hema \$10/each



NK48(NI)C-WhtOpl, PacOpl, ProLav, BlkDiam \$10/each



NK49(NI)C-SiShd, Erin, Mont, BlkDiam \$10/each



NK55(NI)C-WhtOpl, SiShd, BlkDiam, Hema \$10/each



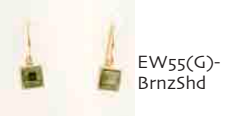
Take any Shape/color and put on an Oval Hoop (HP, \$16) or dangle from an Earwire (EW, \$14)



EW49(G)-Erin



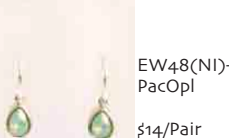
EW48(G)-AstPnk



EW55(G)-BrnzShd



EW49(NI)-BlkDiam



EW48(NI)-PacOpl \$14/Pair

THE "ETERNITY" CUFF

***Made of Solid Brass



ECuff(NI) \$28



ECuff(G) \$28



MINI WORD RINGS AND NECKLACES

NEW!!!

***Rings available in sizes 3,4, 6,7,8,

Available words: mama, inspire, laugh, love, taken...

Rings and necklaces look great stacked/layered!!



WR(G)-mama, inspire, laugh, love, taken \$9/each



WR(N)-mama, inspire, laugh, love, taken \$9/each



WN(G)-inspire, mama, laugh, love, taken \$12/each

Words measure 1/2"-7/8" long, by approx. 1/8" tall Necklaces are approx. 17" plus 2" extension



WN(NI)-mama, laugh, love, inspire, taken \$12/each



STACKABLE RINGS

***AVAILABLE IN SIZES 6,7,8



SR(NI)-Spiked \$7/each (top)
SR(G)-Spiked \$7/each (bott.)



SR(NI)-Balls \$7/each (top)
SR(G)-Balls \$7/each (bott.)



SR(NI)-Bumpy \$7/each (top)
SR(G)-Bumpy \$7/each (bott.)



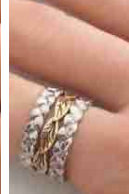
SR(NI)-Braid \$7/each (top)
SR(G)-Braid \$7/each (bott.)



SR(NI)-Leaves \$7/each (top)
SR(G)-Leaves \$7/each (bott.)



R37(G)-Plain \$6 each (top)
R37(NI)-Plain \$6 each (bott.)



Bamboo

STACKABLE "MIDI" RINGS (to be worn above the knuckle, or on the pinky)

***AVAILABLE IN SIZE 3, 4



SR(G)-M-Sw \$7/each



SR(NI)-M-Sw \$7/each



SR(NI)-M-Knot \$7/each



SR(G)-M-Knot \$7/each



SR(G)-M-Bow \$7/each



SR(NI)-M-Bow \$7/each



WR(N)-M-mama, inspire, laugh, love, taken
WR(G)-M-inspire, mama, laugh, love, taken sizes 3 and 4 \$9/Each

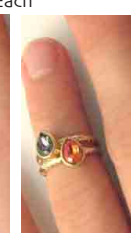
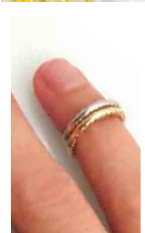


R48 (tear), R49 (Baguette), R54 (Round), R55 (Square) ASSORTED

EX: R48(G)C-M-GldShd size 3

available in size 3 and 4

see page before, for color choices in each style \$9/Each



"PAINTED CHAIN" MULTI-LAYERED NECKLACES



PChn1-Blk-ArrHd \$23 16"+ 3" ext.
 PChn1-Wht-SandDlr \$23 16"+ 3" ext.
 PChn1-Blk-Lock \$23 16"+ 3" ext.
 PChn1-Wht-Tass \$26 16"+ 3" ext.
 PChn1-Blk-Tass \$26 16"+ 3" ext.
 PChn2-Blk-FDL \$23 16", 19"+ 3" ext.
 PChn2-Wht-Leaf \$23 16", 19"+ 3" ext.
 PChn2-Blk-Tass \$26 16", 19"+ 3" ext. also available in white chain



PChn3-Blk-Arrowhd \$38 16", 24", 30"+ 3" ext.
 PChn3-Wht-Knot \$38 16", 24", 30"+ 3" ext.
 PChn4-Blk-Tassel \$35 30" Chain, 4" Tassel
 PChn4-Wht-Tassel \$35 30", 4" Tassel
 PChn5-Blk/Wht \$32 15.5", 17", 18.5", 20", 21.5" + 3" ext.

Available charms for PChn1, PChn2, PChn3 (or add a 2" Tassel for an extra \$3)



Everything available in "Painted" Black Chain or White Chain



PChn6-Blk \$14 16"+ 3" ext.
 PChn6-Wht \$14 16"+ 3" ext.



FLOATING PETAL NECKLACES



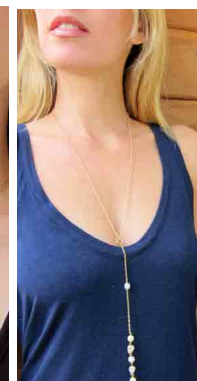
All styles come in "Gold Monochrome" or "Silver/Gold mix"-- if you would like "Silver Monochrome" let us know and we can make it for you...



SEMI-PRECIOUS MINI SKULL NECKLACES WITH FRESHWATER PEARLS (Can be made without skulls)

***Skulls, and Black, Taupe, Natural stones, are made of Howlite. "Blush" stone is Agate. Pearls are Freshwater.

***Semi-Precious stones and Freshwater Pearls will differ slightly in shape, size, texture, and color



SKL2(G) can be worn 3 different ways: worn long, wrapped twice, wrapped like a scarf

SKL3(G)-Natural/ SKL6(G)-Blush/ SKL4(G)-Taupe with SKL5(G)-Taupe from left to right

THE ISTANBUL COLLECTION

***Each pendant is hand-antiqued so will differ a bit, giving you a one of a kind piece, and components are meant to naturally tarnish adding to the vintage and worn feeling of the collection

pictured on 30" chain



P2-Chain-16" \$28



pictured on 30" chain

P1- SmQu-30": \$34 P2-Hema-30": \$39 P3-White-30": \$39 P2-Turq-30": \$39
(Left to Right)

P1- Chain-30" \$26 P2-Chain-30" \$32

P3-Chain-30" \$32

(Left to Right)

all 3 pendants available on 16" + 3" extension, or 30" chain no extension

P1- Chain-16" \$22

P2-Chain-16" \$28

P3-Chain-16" \$28

all 3 pendants available on all 4 colored beaded chain, at 16"+3" ext, or 30" no ext

P1-SmQu, Hema, White, Turq-16" \$26

P2-SmQu, Hema, White, Turq-16" \$32

P3-SmQu, Hema, White, Turq-16" \$32

All Corded Styles are approx. 30" long



P1-GryCord \$27

P1-BlkCord \$27

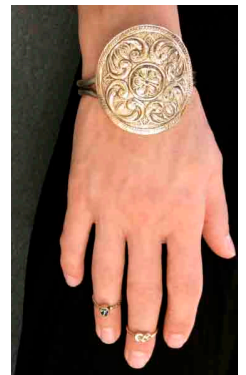
P2-GryCord \$32

P2-BlkCord \$32

P3-GryCord \$32

P3-BlkCord \$32

P2-CUFF \$32



BOHO BEADED, CURVES, AND SPIKES... Layer, Layer, Layer!!!

***NOTE: SEMI-PRECIOUS STONES AND PEARLS WILL DIFFER IN COLOR, SHAPE AND SIZE
 ***components are meant to naturally tarnish adding to the vintage and worn feeling of the collection



BN8(G)-Wht-24" \$22, BN8(NI)-BlkDiam-122 \$26
 BN8(G)-SmQu-122 \$26, BN8(NI)-Hema-30" \$26
 BN8(G)-Turq-16" \$18, from left to right
 BN8(G)-Hema-122 \$26

16" plus 3" extension: \$18, 24" no extension: \$22,
 30" no extension: \$26
 122 Rosary style:
 (approx. 26" around neck + 3.5" drop, no ext): \$26
 ***All lengths/styles come in:
 Gold: White, Smky, Turq, Hema
 Silver: BlkDiam, Hema



16" plus 3" extension
 CN8-White, CN8-Turq, CN8-SmQu, CN8-Hema \$22 each



These Necklaces are approx. 17" plus 2" extension
 CN4 \$12, CN5 \$14, CN6 \$22

Get the layered look with a double necklace- All one piece!



chain/suede: 30" chain/suede: 30" shown 24"... see below for 16", 30" prices 30" around neck
 BN2-Suede(Brwn) \$30, BN2-Chain \$35
 **Freshwater pearls, Wood, Agate
 BN7(G)-Chain-24" \$18, BN7(NI)-Chain-24" \$18
 BN6-Cord(Blk) \$28, BN6-Cord(Gry) \$28
 (16": \$14, (16": \$14, 30": \$20) 30": \$20)
 BN9-Chain \$36, BN9-Suede(Brwn) \$32
 ***Freshwater pearls, Wood, Mother of Pearl Spike



HP(G)-Arrow \$8/pair, HP(NI)-Arrow \$8/pair



Spikes, spikes and more spikes....



EW(G)-Spike \$8/pair, HP(G)-Spike \$10/pair



HP(NI)-Spike \$10/pair, EW(NI)-MiniSpike \$18/pair, EW(NI)-MiniSpike \$18/pair



Lariat-MiniSpike(NI) \$16, Lariat-MiniSpike(G) \$26
 N-Spike(G)-24" \$16, 16": \$13, 30": \$18
 N-Spike(NI)-24" \$16, 16": \$13, 30": \$18
 Lariat-Spike(G) \$20, Lariat-Spike(NI) \$20
 Can be worn 3 different ways--long or short
 Lariat-Spike(G) worn long



BEADED ROSARIES AND NECKLACES WITH TASSELS AND CHARMS AND CRYSTALS

These necklaces look great by themselves, but also look amazing layered...



123(G)-SmQu-Tass \$32



123(G)-Turq-Tass \$32



123(G)-White-Tass \$32



123(G)-Hem-Tass \$32



123(NI)-Hem-Tass \$32



123(NI)-BlkDiam-Tass \$32



122(G)-White-Tass \$32



122(G)-SmQu-Tass \$32



122(G)-Turq-Tass \$32



122(G)-Hem-Tass \$32



122(NI)-Hem-Tass \$32



122(NI)-BlkDia-Tass \$32



122(G)-SmQu-Knot \$26



122(G)-Turq-Love \$26



122(G)-Whit-WishBone \$26



"Leaf"



"Wishbone"



"Knot"

Choose a charm to put on your "rosary" \$26



"Love/Amore" Double sided

"Peace"

"Inspire" "Star"

TASSEL LARIATS AND "Y" NECKS--- CLASSIC, OR WITH FRESHATER PEARLS/GENUINE SMOKY TOPAZ



TL(G)-Classic \$38



TL(G)-Pearl \$44 Freshwater Pearls



TL(G)-Smoky \$44 Smoky Topaz



TY(G)-Classic \$34



TY(G)-Pearl \$38 Freshwater Pearls



TY(G)-Smoky \$38 Smoky Topaz



TY(NI)-Classic



TL(NI)-Classic \$38



TL(NI)-Pearl \$44 Freshwater Pearls



TY(NI)-Classic \$34



TY(NI)-Pearl \$38 Freshwater Pearls



TL(G)-Pearl...worn 4 different ways

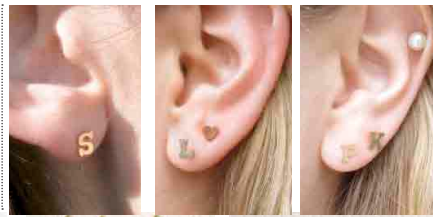
14K GOLD-FILLED TINY STUDS-- WITH SWAROVSKI, SEMI-PRECIOUS STONES, ENAMEL AND PLAIN

**ALL POSTS AND BACKINGS ARE GOLD-FILLED

***NOTE: SEMI-PRECIOUS STONES MIGHT DIFFER SLIGHTLY IN COLOR AND HEIGHT



Gold-Filled: E1(GF)-IN-A
Sterling: E1(SI)-IN-M
ETC...
***Available Letters:
A,B,C,D,E,H,J,K,L,M,N,P,R,S,T,V
***SOLD SEPARATELY SO YOU
CAN MIX AND MATCH INITIALS
\$6/each \$12/pair



If you would like
Earring Cards with
your order, just ask!



E1(SI)-PoHeart \$9



E1(GF)-PoHeart \$9



E1(GF)-Star \$9



E1(GF)-Dove \$9



E1(GF)-Owl \$9



E1(GF)-Bee \$9



E1(GF)-Cherry \$9



E1(GF)-Strawberry \$9



E1(GF)-Bow \$9



E1(GF)-Bolt \$9



E1(GF)-clover \$9



E1(GF)-Moon \$9



E1(GF)-Leaf \$9



E1(GF)-C-WhtOpl \$10



E1(GF)-C-PacOpl \$10



E1(GF)-C-GldnShd \$10



E1(GF)-C-BlkDiam \$10



E1(GF)-C-DenimBl \$10



E1(GF)-C-Fuchs \$10



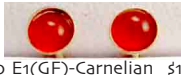
E1(GF)-C-Purple \$10



E1(GF)-C-Hema \$10



E1(GF)-Turquoise \$10



E1(GF)-Carnelian \$10



E1(GF)-Tiger Eye \$10



E1(GF)-Lapis \$10



E1(GF)-Hematite \$10



E1(GF)-Onyx \$10

**Tiny Round studs with Swarovski/
Semi-Precious are approx. 3mm
**Make sure you add a "C" for Hematite
crystal, and no "C" for Hematite Semi-P



E1(GF)-Apple-Red \$10



E1(GF)-Apple-Green \$10



E1(GF)-Heart-Turq \$10



E1(GF)-Heart-Pink \$10



E1(GF)-Heart-White \$10



E1(GF)-Heart-Black \$10

ROUND, OVAL, SQUARE STUD EARRINGS,-SOLID BRASS WITH ENAMEL OR SWAROVSKI

EARRING POSTS ARE 14K GOLD-FILLED OR SURGICAL STEEL, BACKINGS ARE GOLD-PLATED BRASS (NICKEL FREE/HYPOALLERGENIC) OR SURGICAL STEEL



E22(G)E-Wht \$15



E22(G)E-Turq \$15



E22(G)E-Coral \$15



E22(G)E-Pink \$15



E22(G)E-Grey \$15



E22(G)E-Blue \$15



E22(G)E-Navy \$15



E22(G)E-Burg \$15



E22(G)E-Purple \$15



E22(G)E-Blk \$15



E22(NI)E-White \$15



E22(NI)E-Turq \$15



E22(NI)E-Grey \$15



E22(NI)E-Blue \$15



E22(NI)E-Navy \$15



E22(NI)E-Blk \$15



E22(G)C-SiShade \$16



E22(G)C-VinRs \$16



E22(G)C-PrLav \$16



E22(G)C-GryOpl \$16



E22(G)C-GldShd \$16



E22(G)C-Fuchs \$16



E22(G)C-Erin \$16



E22(G)C-BlkDiam \$16



E22(G)C-Hem \$16



E22(NI)C-Sishade \$16



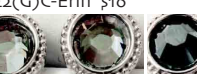
E22(NI)C-PrLav \$16



E22(NI)C-GryOpl \$16



E22(NI)C-Erin \$16



E22(NI)C-BlkDiam \$16



E22(NI)C-Hema \$16



E9(G)C-PacOpal \$18



E9(G)C-WhtOpal \$18



E9(G)C-SiShade \$18



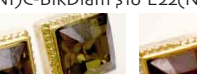
E9(G)C-GldShd \$18



E9(G)C-BlkDiam \$18



E9(G)C-Mont \$18



E9(G)C-SmQu \$18



E9(G)C-Burg \$18



E9(NI)C-PacOpal \$18



E9(NI)C-WhtOpl \$18



E9(NI)C-SiShade \$18



E9(NI)C-BlkDiam \$18



E9(NI)C-Mont \$18



E10(G)C-WhtOpl \$16



E10(G)C-AirBl \$16



E10(G)C-PacOpl \$16



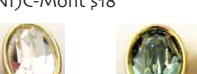
E10(G)C-PnkOpl \$16



E10(G)C-GldShd \$16



E10(G)C-SiShad e \$16



E10(G)C-Erin \$16



E10(G)C-SmQu \$16



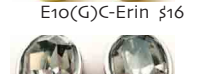
E10(G)C-BlkDiam \$16



E10(G)C-Mont \$16



E10(G)C-Burg \$16



E10(NI)C-BlkDiam \$16



E10(NI)C-WhtOpl \$16



E10(NI)C-AirBl \$16



E10(NI)C-PacOpl \$16



E10(NI)C-PnkOpl \$16



E10(NI)C-SiShade \$16



E10(NI)C-Erinite \$16



E10(NI)C-Mont \$16



E10(NI)C-Mont \$16

CHARMED...

***Necklaces are approx. 16.5" plus a 2" extension, all look great layered!!! All come carded if requested!!!



CH-3Btf-Pearl, CH-3Btf-Neon, CH-3Btf-Crl/Turq,
CH-3Btf-Nvy/Grn, CH-Btf-Nvy/Wht
\$10 each



CH-3Hrt-Pearl, CH-3Hrt-Neon, CH-3Hrt-Crl/Turq,
CH-3Hrt-Nvy/Grn, CH-3Hrt-Nvy/Wht
\$10 each



CH-3Str-Pearl, CH-3Str-Neon, CH-3Str-Crl/Turq,
CH-3Str-Nvy/Grn, CH-3Str-Navy/Wht
\$10 each



***all necklaces come on a card if requested



CH-Bow-White, CH-Bow-Coral,
CH-Bow-Turq, CH-Bow-Gry, CH-Bow-Nvy
\$10 each



CH-Birds-White, CH-Birds-Pnk,
CH-Birds-Blk
\$10 each



A,B,C's and "WHAT'S YOUR SIGN"?

***Both styles come on a 16" chain with 2" extension, all look great layered!!!



In(NI)-Nk-C, In(NI)-Nk-R,
In(NI)-Nk-B
\$10 each



In(G)-Nk-D(Turq), In(G)-Nk-M(Blk),
In(G)-Nk-H(Wht), In(G)-Nk-K(Blk),
In(G)-Nk-V(Turq)
\$10 each



SKINNY
made in the USA



Initials In Gold plated, available in:
Turquoise, Black, or White
Initials in Rhodium Plated,
available in: Black
***all initials come on a card if
requested 6 PIECE MINIMUM



In(NI)-Br-R,
In(G)-Br-P(Turq)
\$11 each

16 AVAILABLE LETTERS:
A, B, C, D, E, H, J, K, L, M, N, P, R, S, T, V



Left to right
Z-Nk(Libra), Z-Nk(Gemini), Z-Nk(Aquar)
\$12 each!!



Left to right
Z-Nk(Sag), Z-Nk(Aries), Z-Nk(Leo)
\$12 each



Left to right
Z-Nk(Pisces), Z-Nk(Scorp), Z-Nk(Canc)
\$12 each



Left to right
Z-Nk(Taurus), Z-Nk(Cap), Z-Nk(Virg)
\$12 each

***Zodiacs are available in the color of their corresponding element (white=air, aqua=water, coral=fire, green=earth) or in black... 6 piece minimum



Left to right
Z-Nk(Leo)-Blk, Z-Nk(Pisces)-Blk,
Z-Nk(Virgo)-Blk,
\$12 each



Bracelets are 7 1/2" long
Left to right
Z-Br(Sag), Z-Br(Pisc),
Z-Br(Virgo), Z-Br(Aquar),
Z-Br(Gem)-Blk
\$13 each



all zodiacs come packaged on a card describing the attributes of the sign/element



MORE CHARMED... NEW STYLES!!

***all styles come on a 16" chain with 2" extension, all look great layered!!! All come carded if requested!!!



Plumeria/hummingbirds are approx. 1/2" tall

Tiny Hearts are approx. 3/16" tall

Tiny Stars are approx. 1/8" tall

Tiny shell/anchor are approx. 1/4" tall

Tiny Animals are approx. 1/4" tall

CH-Plumeria- White, Salmon, Coral, Aqua, Navy \$10 each

CH-Hummingbird- White, Coral, Pink, Aqua, Purple \$10 each

CH-Tiny Heart White, Pink, Coral Turq, Blk \$8 each

CH-Tiny Star White, Aqua, Coral, Pewter, Navy \$8 each

CH-Tiny Shell \$8 ea
CH-Tiny Anchor \$8
CH-Owl, CH-Lion, CH-Eleph \$8 each



fruits are approx. 1/2" tall

Tiny series are approx. 1/4"

Swarovski Crystal- approx. 5mm round bezel have matching studs

CH-Grapes, CH-Orange, CH-Apple, CH-Pear, CH-Strwbrry, CH-Pineappl \$10 each

CH-BFriend-Red, Navy, White \$17-- sold as a set

CH-TinyFlw- Turq, Coral, Wht \$8/each

CH-Tiny StBurst Nvy, Turq, Wht \$8 each

CH-TinyClvr- \$8

CH-Bz-GldenShad, WhtOpl, PacOpl, DenBl, Ruby, BlkDia, PurpVel, Hema \$8 each



This series: just under 1/2" tall

NEW! Approx. 3/4" tall

NEW! Approx. 3/8" tall



CH-FDL- Wht, Grey, Purple \$10/each

CH-Star- White, Navy, Orng \$10/each

CH-Love- Red, Black \$10/each

CH-Clvr \$10

CH-Scriptlove \$10

CH-CutHeart, CutDove, CutStar \$8/each



Charm by itself with jump ring: \$4/each Ex: Ch-Button
Charm on Chain: \$10 Ex. Ch-Button-16"

CHARMED, I'M SURE...

***Choose your charms by themselves or on a faceted link Chain 16" plus 2" extension



"Love" "Amore" "Peace" "Inspire"
"Love/Amore" Double sided "Peace" "Inspire"

"Seahorse" "Camera" "Feather" "FDL" "Sun" "Moon"

"Sand Dollar" "Star" "Leaf" "Knot" "Lock" "Enameled Heart"

"Button" "Wishbone" "Purse" "Shoe" "Martini"

"TWISTED FLOATING HORSESHOE" RING WITH WITH SWAROVSKI CRYSTALS OR GLASS BEADS
*****MADE OUT OF SOLID BRASS ***SIZES 6,7,8**



"FLOATING HORSESHOE" RING WITH WITH SWAROVSKI CRYSTALS
*****MADE OUT OF SOLID BRASS ***SIZES 6,7,8**



DOUBLE "FLOATING RINGS" WITH OVAL SWAROVSKI CRYSTALS
Available Sizes: 5/6, 6/7, 7/8, AS SEEN ON RHIANNA AND IN MANY MAGAZINES!



DOUBLE "FLOATING SPIKED RING" and "FLOATING SPIKED HORSESHOE RING"
*****All made of Solid Brass**



HAND-FABRICATED DIAMOND CUT LAYERING BRACELETS

HAMMERED LAYERING BRACELETS



BNG12(NI)-Plain BNG12(G)-Plain \$7/each (2 3/4")



BNG10(G) \$9 Each



BNG10(NI) \$9 Each

SQUARE CRYSTAL AND "4 CORNER" ROUND CRYSTAL STACKABLE BANGLES WITH SWAROVSKI CRYSTALS



Bng2(G)-WhtOpl \$12 each--2 stones Bng2(G)-SiShade \$12 each---2 stones Bng2(G)-Gldshd \$12 each---2 stones Bng2(G)-PacOpl \$12 each---2 stones Bng2(G)-Mont \$12 each---2 stones Bng2(G)-BlkDiam \$12 each---2 stones



Bng2(G)-SmkQu \$12 each--2 stones Bng2(G)-Burg \$12 each--2 stones Bng2(Ni)-WhtOpl \$12 each--2 stones Bng2(Ni)-SiShade \$12 each--2 stones Bng2(Ni)-PacOpl \$12 each--2 stones Bng2(Ni)-Mont \$12 each--2 stones Bng2(Ni)-BlkDia \$12 each--2 stones



BNG4(G)C-SiShade \$12 each 4 stones BNG4(G)C-PacOpal \$12 each 4 stones BNG4(G)C-GldShdo \$12 each 4 stones BNG4(G)C-Whtopl \$12 each 4 stones BNG4(G)C-Gryopl \$12 each 4 stones



BNG4(G)C-Erinite \$12 each 4 stones BNG4(G)C-CryCprr \$12 each 4 stones BNG4(G)C-SmQu \$12 each 4 stones BNG4(G)C-BlkDia \$12 each 4 stones BNG4(G)C-Hem \$12 each 4 stones



BNG4(NI)C-SilShade \$12 each ---4 stones BNG4(NI)C-WhtOpl \$12 each ---4 stones BNG4(NI)C-PacOpal \$12 each--- 4 stones BNG4(NI)C-Erinite \$12 each--- 4 stones BNG4(NI)C-GryOpl \$12 each--- 4 stones BNG4(NI)C-BlkDiam \$12 each--- 4 stones BNG4(NI)C-Hem \$12 each ---4 stones

BANGLE SETS

***Here are some suggestions and ideas of how to group and merchandise our wide variety of bangles

***Tie them together yourself, or ask us and we will tie them together for you with a silk cord

***Bangles are priced the same separately or tied together



BSET(G)-26 \$45/group BSET(G)-18 \$60/group BSET(G)-27 \$48/group BSET(G)-28 \$60/group BSET(G)-29 \$48/group BSET(NI)-33 \$60/group

SEMI-PRECIOUS "SPIKE" NECKLACES, BRACELETS, EARRINGS

***All Spikes are made of the Semi-Precious stone "Howlite" and will differ slightly in color, texture, and size

***Chain is 18K Gold Plated Brass



Sp5(G)- Turquoise, Coral, Periwinkle, Black, Natural
\$20 each 18" Long



Sp7(G)- Turq/Natural, Coral/Natural, Turq/Coral,
Periwinkle/Natural, Black/Natural
\$22 each 18" long



Gold:
HP-Spike-
Turq, Coral, Black
Silver:
HP-Spike-
Turq, Black



\$10 each

Spikes for necklaces are approx. 1 3/4" long, Spikes for earrings and bracelets are approx. 1 3/8" long



Sp1(G)- Natural, Coral, Turquoise, Periwinkle, Black
\$24 each

Chain is 30" long-- can be worn long/ wapped twice and worn short (see pictures below)

Each Necklace includes a Semi-Precious Spike, a Star Charm, a Feather Charm, and a "Citrine" Crystal



Sp2(G)- Natural, Turquoise, Coral, Periwinkle, Black \$18 each

LARIAT: Chain is 34" long-- can be worn many ways--long or wapped twice and worn short, or pulled through like a scarf and worn short (see pictures below)



Sp5(G)-Turq



Sp7(G)-Turq/Coral



Sp7(G)-Blk/Natural



Sp1(G)-Coral worn long and wrapped twice



Sp2(G)-Natural worn long, wrapped like a scarf, wrapped twice



ENAMELED "FLAT" FINGER CANDY RINGS

Sizes 6,7,8,9

****note: R2 ring runs about a 1/2 size small because of the wide band so size up



R2(G)E-Aqua Swrl \$14 (Gold)
R2(Ni)E-Aqua Swrl \$14 (Nickel)



R2(G)E-Salmon Swrl \$14 (Gold)
R2(Ni)E-Salmon Swrl \$14 (Nickel)



R2(G)E-BabyPink Swrl \$14 (Gold)
R2(Ni)E-Baby Pink Swrl \$14 (Nickel)



R2(G)E-Pewter Swrl \$14 (Gold)
R2(Ni)E-Pewter Swrl \$14 (Ni)



R2(G)E-Grey \$14 (Gld)
R2(Ni)E-Grey \$14 (Ni)



R2(G)E-Turq \$14 (Gold)
R2(Ni)E-Turq \$14 (Nickel)



R2(G)E-Orange \$14 (Gold)
R2(Ni)E-Orange \$14 (Nickel)



R2(G)E-Pink \$14 (Gold)
R2(Ni)E-Pink \$14 (Nickel)



R2(G)E-White \$14 (Gold)
R2(Ni)E-White \$14 (Nickel)



R2(G)E-Green \$14 (Gold)
R2(Ni)E-Green \$14 (Nickel)



R2(G)E-Black \$14 (Gold)
R2(Ni)E-Black \$14 (Nickel)



R2(G)E-Purple \$14 (Gold)
R2(Ni)E-Purple \$14 (Nickel)



R2(G)E-Blue \$14 (Gold)
R2(Ni)E-Blue \$14 (Nickel)



R2(G)E-Navy \$14 (Gold)
R2(Ni)E-Navy \$14 (Nickel)



R2(G)E-Smoke \$14 (Gold)
R2(Ni)E-Smoke \$14 (Nickel)



R2(G)E-Burg \$14 (Gold)
R2(Ni)E-Burg \$14 (Nickel)